

Designed for Durability

Engineered for Ultimate Strength™



Advantage® Cast Iron Tactile Walking Surface Indicator (TWSI) plates are manufactured in strict accordance with ASTM A-48, Class 35B Grey Cast Iron. The Advantage® Cast in Place System is lightweight with exceptional high strength, and utilizes the most advanced metallurgical Engineering Science and Technology to meet and exceed the most stringent municipal standards. Advantage® Cast Iron is aesthetically pleasing, has exceptional longevity and incorporates integral texture for a permanent slip resistant surface.

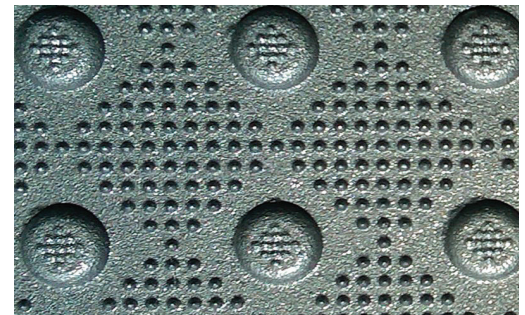
Tactile Walking Surface Indicators (TWSI) products for the following and many more applications:

- Curb Ramps
- Pedestrian Crossings
- Transit Platforms
- Vehicular Passage Ways
- Parking Areas
- Top of Stair Landings

COMPLIANCE

Kinesik Engineered Products Incorporated is in full compliance with Canadian Accessibility Codes. The full product range of Kinesik tactile walking surface indicators meet the most recent AODA, CSA, ISO, provincial and national building codes. Kinesik Engineered Products Incorporated is your one stop source for all tactile systems for internal and external applications. Only Kinesik provides a complete range of products designed for safety, convenience and code compliance.

See back for details.

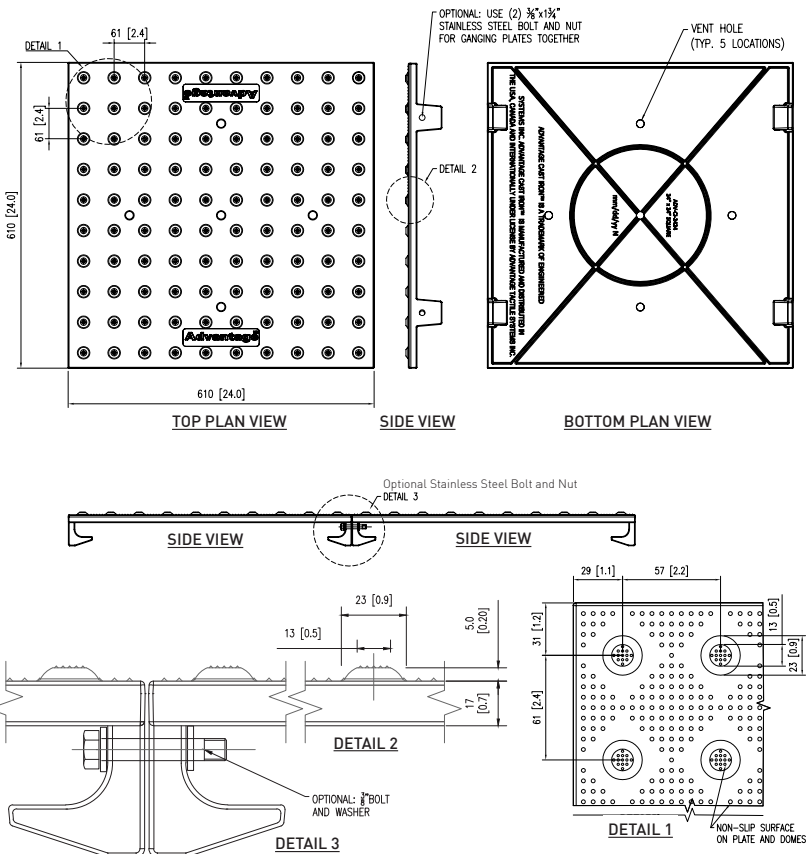


PRODUCT FEATURES

- Lightweight and easy to install
- Bolted connection allows for easy connectability between two or more plates
- Available in various sizes and radii
- Engineered to endure the toughest conditions such as snow plows, overweight vehicular loads and heavy pedestrian traffic
- Maintenance-free natural patina
- ASTM A48, Class 35B Grey Cast Iron
- Can be recycled after its lifecycle
- Largest selection of standard and radii sizes
- 10 year manufacturer's warranty



Tactile Walking Surface Indicator (TWSI) with Truncated Domes



KINESIK Engineered Products Incorporated

2213 North Sheridan Way
Mississauga, Ontario L5K 1A3
Canada

Phone: 855.364.7763
Fax: 800.769.4463
www.kinesik.ca

PROFESSIONAL ASSOCIATIONS

Kinesik is proud to be a member of the following organisations



STANDARD COLOUR



Uncoated
Natural Patina

OPTIONAL COLOURS



Federal Yellow



Safety Red



Onyx Black

ADVANTAGE® CAST IRON SIZES

Standard	Radial	
18"x24" (457 mm x 610 mm)	10' (3,048 mm)	25' (7,620 mm)
24"x24" (610 mm x 610 mm)	15' (4,572 mm)	30' (9,144 mm)
30"x24" (762 mm x 610 mm)	17'5" (5,334 mm)	35' (10,668 mm)
	20' (6,096 mm)	

PLATE SPECIFICATIONS

Standard Specification for Grey Iron Castings, Class 35B

ASTM Reference	Test Description	Value
ASTM C 1028	Static Coefficient of Friction	≥ 1.1 wet/dry
ASTM A 327	Impact Resistance	No damage @ 54 J
ASTM A 48	Compressive Strength	785 MPa
ASTM E8/E8M-13a	Tensile Strength	≥ 241 MPa
ASTM C 501	Abrasive Wear Index	> 55

APPLICATIONS

TWSI – Truncated Domes

- Accessible curb ramps align with the safe pedestrian crossing route across the vehicle roadway.
- An entry into a vehicular route or area where no curbs or other elements separate it from pedestrian route such as curb ramps, wheel chair ramps, top of stairs/escalators and blended transitions.
- An unprotected drop off edge, such as a transit platform where the change in elevation is greater than 250 mm or the slope is steeper than in a ratio of 1:3 (33%).
- The unprotected edges of a reflecting pool.